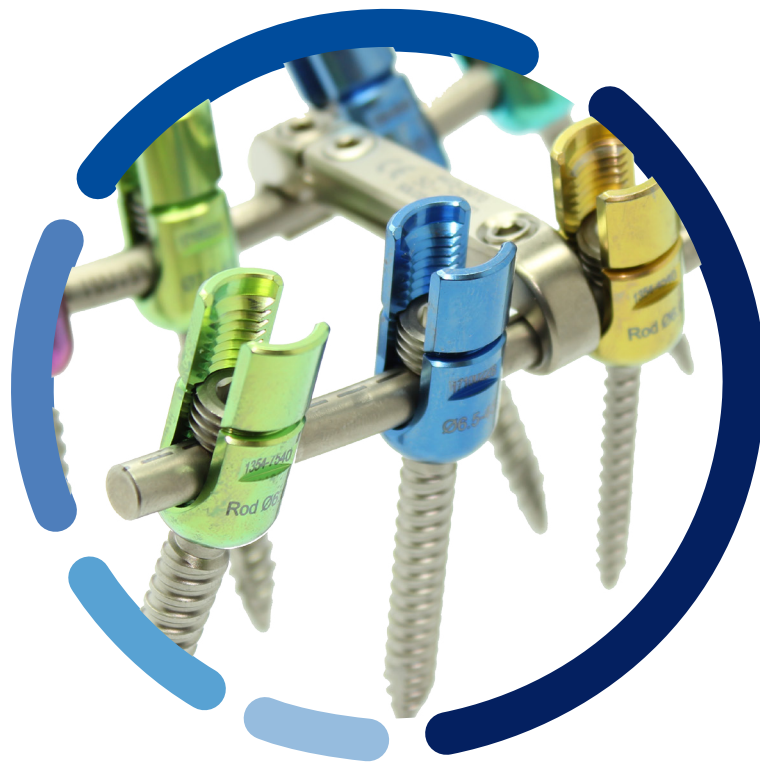


OpenLac-L

Posterior Thoracolumbar Spinal Fixation Screw System



LEARNING & KNOWLEDGE BIOMED

L&K BIOMED



www.lnkbiomed.com

OpenLoc-L

Posterior Thoracolumbar Spinal Fixation Screw System



Overview

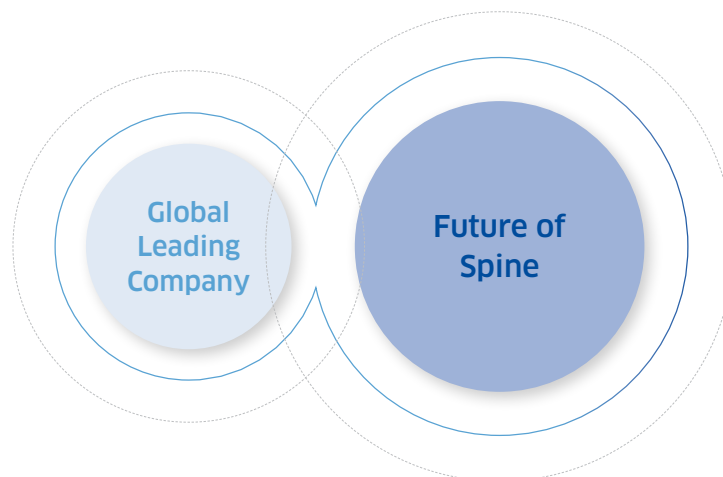
OpenLoc-L is a secondary brand name of the previous LnK Spinal Fixation System. It is comprised of screws, set screws, rods, crosslinks, connectors and hooks. The components of this system are manufactured using Titanium alloy and CoCrMo alloy. The screws are available in various sizes with a high degree of versatility.



L&K BIOMED is motivated to improve the medical Industry as well as human healthcare as a leading company in the spinal medical device field.

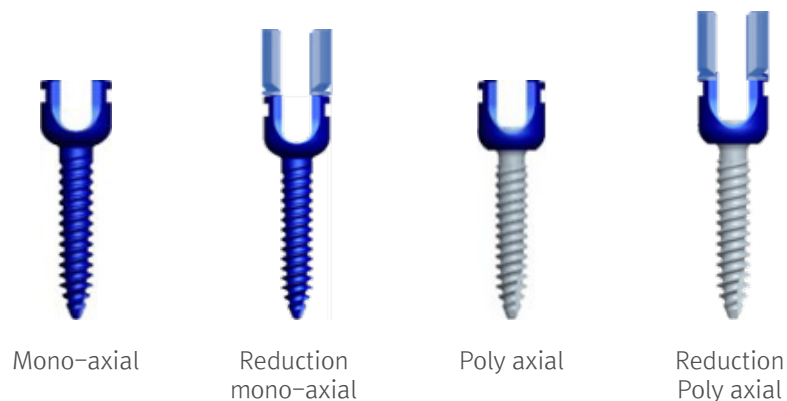
As a medical device manufacturer, L&K BIOMED successfully developed business in North America, the biggest medical device market in the world.

Furthermore, L&K BIOMED is currently developing new markets in the Middle East, Europe, and South America to broaden our global sales network.



OpenLoc-L Posterior Thoracolumbar Spinal Fixation Screw System

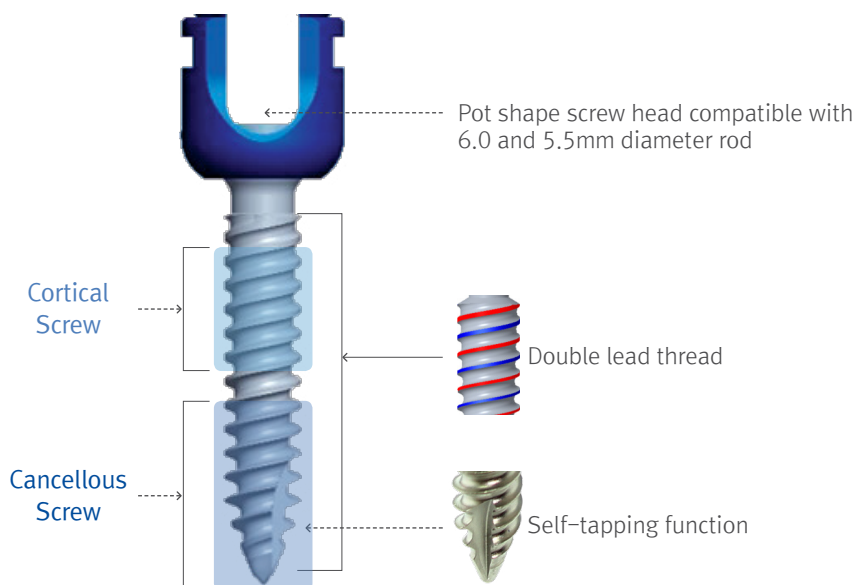
Features & Benefits



Screw types

- ① mono-axial, regular head
- ② mono-axial, reduction head
- ③ poly-axial, regular head
- ④ poly-axial, reduction head

- Screws are anodized



Dual threading

- Cortical & Cancellous
- High resistance against pull-out

Screw core

- Conical

Screw Thread

- Cylindrical

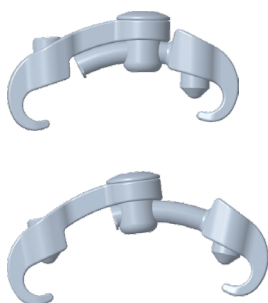
Indication

The *OpenLoc-L* is for the following indications, regardless of the intended use :

- Degenerative disc disease (defined as discogenic back with degeneration of the disc confirmed by history and radiographic studies)
- Spondylolisthesis Trauma (Fracture / Dislocation)
- Deformities or Curvatures (i.e., Scoliosis , Kyphosis, and/or Lordosis)
- Tumor
- Spinal Stenosis
- Failed previous fusion (pseudoarthrosis)

OpenLoc-L Posterior Thoracolumbar Spinal Fixation Screw System

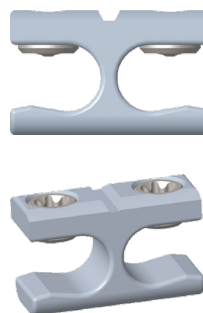
Cross-link



Specifications

- 30-34mm
- 34-42mm
- 40-53mm
- 50-70mm

Side Click Connector



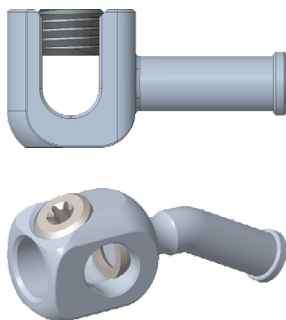
Specifications

- 20mm
- 22mm
- 24mm
- 26mm

Compatible with 5.5mm-6.35mm Rod

Double side open

Lateral Connector (Iliac)

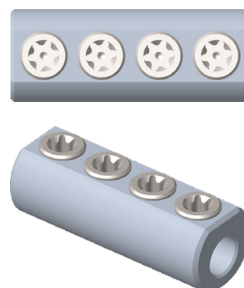


Specifications

- 15mm
- 20mm
- 25mm
- 30mm
- 35mm
- 40mm

2 Type Open / Closed

Axial Connector



Specifications

- 20mm
- 22mm
- 24mm
- 26mm

Compatible with 5.5mm-6.35mm Rod

Double side open

Rod



Basic Types:

- Regular rod
- Hex end
- Single stopper
- Double stopper

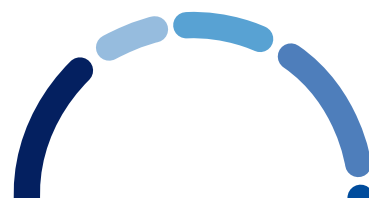
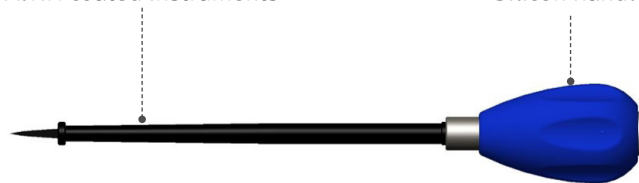
Two different materials:

- Titanium alloy
- Co-Cr-Mo

Instrument special feature

AlTiN coated instruments

Silicon handle



Screw specification

Product	Diameter (per1 mm)	Length (per0.5mm)	Rod Diameter (mm)
Poly screw (with iliac screw)	4.5–8.5	20–150	5.5–6.0
Reduction poly screw (with iliac screw)	4.5–8.5	20–150	5.5–6.0
Mono screw	4.5–7.5	20–60	5.5–6.0
Reduction mono screw	4.5–7.5	20–60	5.5–6.0

Also available



CastleLoc-C



ATP Peek cage
(L5-S1)



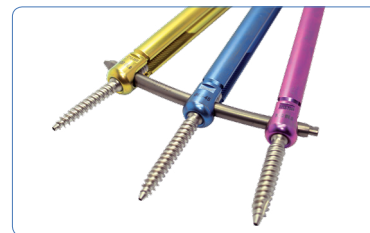
PathLoc-LC



ALIF cage



PLIF & TLIF cage



PathLoc-L



CastleLoc-S



CastleLoc-P



PathLoc-SI



Head Office: #201, 202 16-25, Dongbaekjungang-ro, Giheung-gu, Yongin-si, Gyeonggi - do, 17015, Korea

Seoul Office: 159-1, Mokdongseo-ro. 17th Floor. Yangcheon-gu. Seoul, 07997 South Korea

Tel. +82-1600-0841 Fax: +82-1600-0843 www.lnkbimed.com

