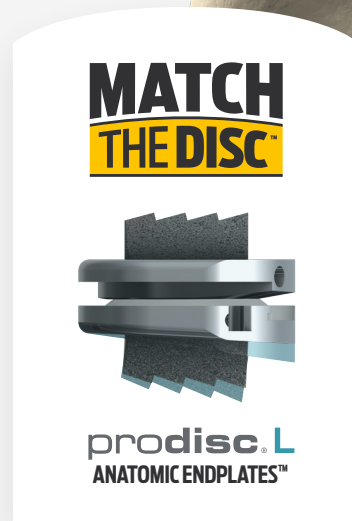
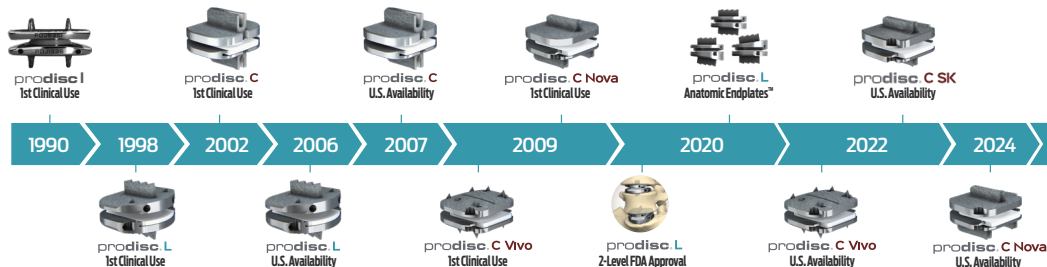


# prodisc® L

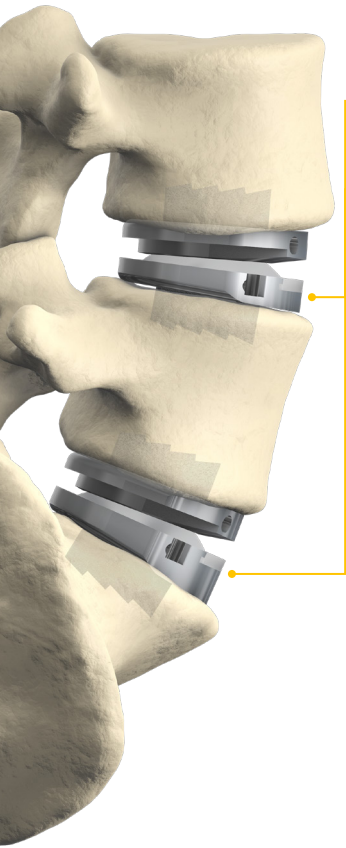
Clinically Proven Motion Preservation for the Lumbar Spine



**Over 30 Years of**  
**Total Disc Replacement**  
**Leadership, Innovation,**  
**& Clinical Excellence**

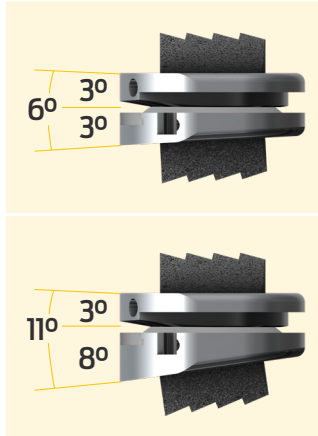


## ANATOMIC ENDPLATES™

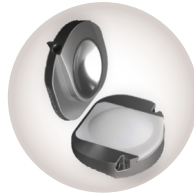


### MATCH THE DISC™

Designed to better match patient anatomy, allowing a customized fit throughout the full range of indicated levels (L3-S1)

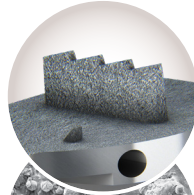


## DESIGN BENEFITS



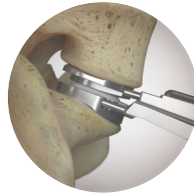
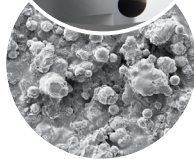
### Proven Materials

- Proven articulating surfaces: ultra-high molecular weight polyethylene (UHMWPE) on Cobalt Chrome (CoCrMo) alloy.



### Implant Fixation

- Central keel facilitates midline placement and provides secure primary fixation.
- Titanium plasma sprayed porous coating helps foster bony integration.

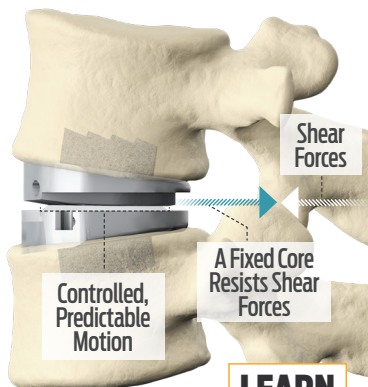


### Safe & Reproducible Surgical Technique

## PROVEN MOTION TECHNOLOGY

Powered By  
**prodisc<sup>®</sup> CORE**  
TECHNOLOGY

- The fixed core and optimized core radius together provide stability and controlled predictable motion<sup>1,2</sup>



**LEARN  
MORE**



## CLINICAL EVIDENCE

NEARLY  
**4x**  
LESS LIKELY

for prodisc L patients to experience degeneration in adjacent levels than fusion patients<sup>3</sup>

**<1%**  
REVISION RATE

for prodisc devices<sup>4</sup>

GREATER THAN  
**275k**  
IMPLANTATIONS

of prodisc technology platform in the last 30 years, worldwide<sup>5</sup>

GREATER THAN  
**540**  
PUBLISHED PAPERS

studying the prodisc technology platform<sup>6</sup>